



# Report on COVID-19 Outbreaks in Nursing Homes and Community Hospitals Week 28 2022 Health Protection Surveillance Centre, July 20<sup>th</sup> 2022

## Dates to note:

- Week 28 2022 (July 10<sup>th</sup>-16<sup>th</sup> 2022)
- Week 10 2020 (1<sup>st</sup> to 7<sup>th</sup> April March 2020) –The beginning of the pandemic in Ireland
- Wave 5 of the pandemic in Ireland (Week 51 (week commencing 19<sup>th</sup> December 2021) to date)

Note: The epidemiological weeks in this report, run from Sunday to Saturday, please refer to the surveillance resources on the HPSC website for a complete list of epidemiological weeks with start and end dates.

*Note: Data were extracted from the Computerised Infectious Disease Reporting (CIDR) system on 20/07/2022. These data are provisional and subject to ongoing review, validation and update. As a result, figures in this report may differ from previously published figures.*

## Notes

The following report provides information on COVID-19 outbreaks/clusters notified on CIDR to midnight July 16<sup>th</sup> 2022 (week 28) and extracted from CIDR at 8am on July 20<sup>th</sup> 2022

Data are provisional and subject to ongoing review, validation and updating. For this reason, data reported may not match data previously reported or outbreaks data reported in the future for the same time period. Furthermore, the number of linked cases is based on the number of linked cases at the time of extraction from CIDR and an outbreak may increase in size since the time of extraction due to more cases occurring or more information becoming available on CIDR.

**Sincere thanks are extended to all those who are participating in the collection of data and reporting of data used in this report, particularly under the current challenging circumstances.** This includes the HSE COVID-19 Contact Management Programme (CMP), staff in ICU units, notifying clinicians, laboratory staff, Public Health doctors, Nurses, Surveillance Scientists, Microbiologists and Administrative staff.

# COVID-19 outbreaks in Nursing Homes and Community Hospitals, Waves 1-5



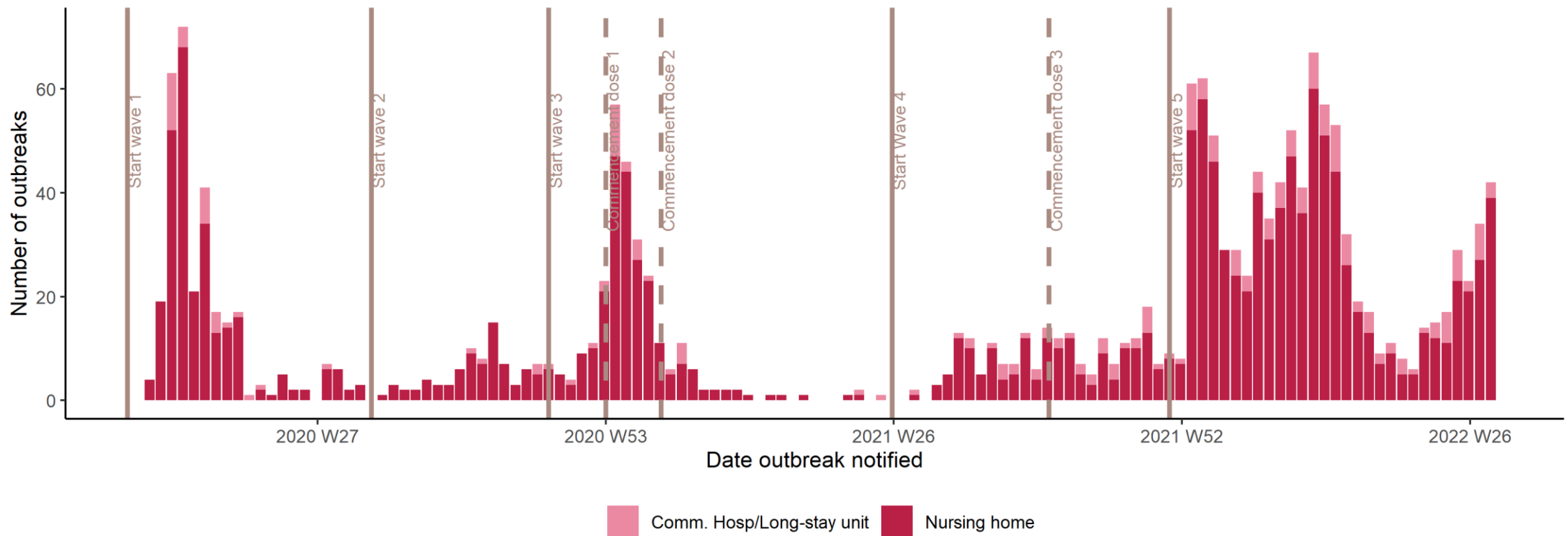
Wave	Outbreak			Confirmed cases for which disaggregate data are available				
	Number of outbreaks	Number of cases*	Number of deaths <sup>#</sup>	Number	Number hospitalised	Number admitted to ICU	Number hospitalised and died	Number who died
Wave 1 (weeks 10-31 2020)	301	6658	1104	6251	474	16	193	885
Wave 2 (weeks 32-47 2020)	80	1571	139	1555	90	<5	25	134
Wave 3 (week 48 2020 - week 25 2021)	267	8379	1045	8332	576	12	200	1033
Wave 4 (weeks 26-50 2021)	202	2902	217	2712	190	<5	50	206
Wave 5 (weeks 51 2021 – week 24 2022)	940	17710	378	12040	711	5	78	321
<b>Total</b>	<b>1790</b>	<b>37220</b>	<b>2883</b>	<b>30890</b>	<b>2041</b>	<b>37</b>	<b>546</b>	<b>2579</b>

\*the larger between the aggregate number of confirmed cases reported or the number of confirmed linked cases. In wave 5, includes cases confirmed by PCR or Antigen testing

<sup>#</sup>the larger between the aggregate number of outbreak deaths reported and the number of linked cases (confirmed and probable) who died.

- Overall, there have been 1,790 COVID-19 outbreaks in Nursing homes and Community Hospitals
- Disaggregate data are available for 30,890 of the 37,220 associated cases (83%)
- 2,041 of 30,890 laboratory confirmed outbreak cases for which disaggregate data are available have been hospitalised (6.6%)
- 2,579 deaths have been reported among confirmed outbreak cases in these settings for which disaggregate data are available (8.3%)

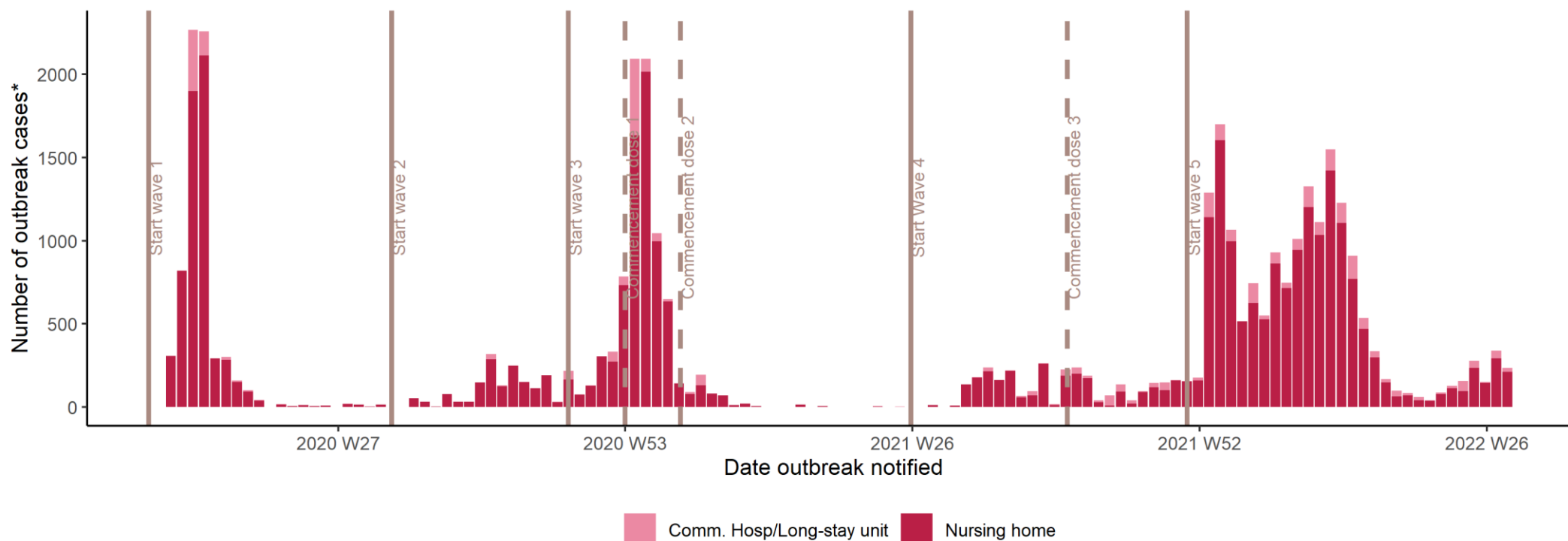
# Weekly number of COVID-19 outbreaks in Nursing Homes and Community Hospitals, Waves 1-5



Large peaks occurred in the number of outbreaks in wave 1 (72 outbreaks in a single week), wave 3 (57 outbreaks in a single week) and wave 5 (67 outbreaks in a single week).

Following a decline in outbreak numbers to week 21 2022 (6 outbreaks), there was an increase again in the number of outbreaks reported each week to 42 in week 28

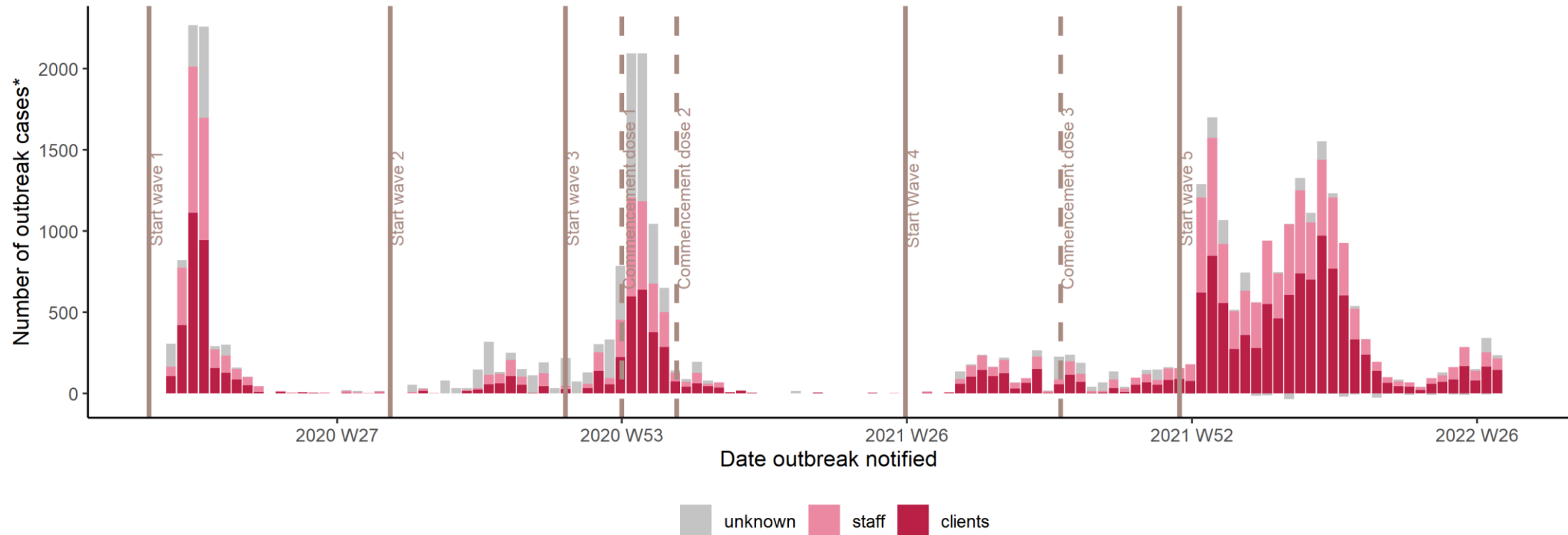
# Cases associated with COVID-19 outbreaks in Nursing Homes and Community Hospitals, Waves 1 to 5



For outbreaks reported in week 28 2022, the number of outbreak associated cases was 236. The peak in weekly case numbers in wave 5 was in outbreaks reported in week 2 2022 with 1699 cases. This was more than 6 times the peak weekly number of cases in wave 4 (n=265), and 81% of the peak weekly number of cases in wave 3 (n=2092)

Note: Numbers of associated cases are based on the larger between the aggregate number of confirmed cases reported and the number of confirmed linked cases

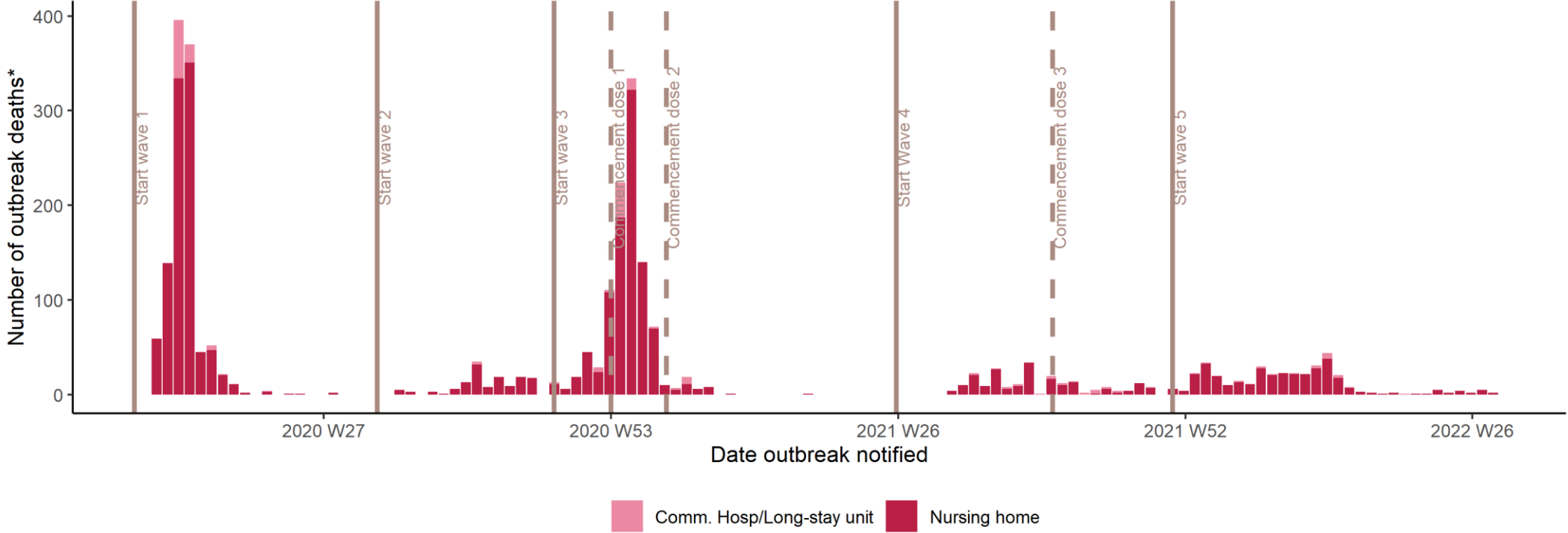
# Cases associated with COVID-19 outbreaks in Nursing Homes and Community Hospitals by healthcare worker status, Waves 1 to 5



In week 28, 69 outbreak associated cases (29%) were among staff and 146 (62%) among residents, with HCW status of 21 cases (9%) not reported

Note: Numbers of associated cases are based on the larger between the aggregate number of confirmed cases reported and the number of confirmed linked cases. Staff and clients case numbers were derived from aggregate data provided on the number of staff and clients cases.

# Deaths associated with COVID-19 outbreaks in Nursing Homes and Community Hospitals by week of outbreak notification, waves 1 -5



In wave 5, the highest number of deaths associated with outbreaks reported in a single week was 44 in week 13. This compares to 396 deaths associated with outbreaks reported in week 14 2020, and 334 deaths associated with outbreaks reported in week 2 2021

Note: Number of associated deaths is based on the larger between the aggregate number of deaths reported and the number of linked cases who died (confirmed and probable) per outbreak

# Disease severity among confirmed cases linked to outbreaks in Nursing Homes and Community Hospitals for which disaggregate data are available, by wave and age group



Age group	Wave	Number	Number hospitalised	% hospitalised	Number admitted to ICU	% ICU	Number who died	% died
<65 yrs	Wave 1	2672	88	3.3%	5	0.2%	20	0.7%
	Wave 2	779	15	1.9%	<5	0.0%	<5	0.1%
	Wave 3	4037	101	2.5%	8	0.2%	18	0.4%
	Wave 4	1180	16	1.4%	<5	0.2%	7	0.6%
	Wave 5	4840	86	1.8%	<5	0.0%	<5	0.1%
65+ yrs	Wave 1	3577	386	10.8%	11	0.3%	865	24.2%
	Wave 2	776	75	9.7%	<5	0.1%	133	17.1%
	Wave 3	4295	475	11.1%	<5	0.1%	1015	23.6%
	Wave 4	1532	174	11.4%	<5	0.1%	199	13.0%
	Wave 5	7200	625	8.7%	<5	0.1%	317	4.4%
All ages	Wave 1	6251	474	7.6%	16	0.3%	885	14.2%
	Wave 2	1555	90	5.8%	<5	0.1%	134	8.6%
	Wave 3	8332	576	6.9%	12	0.1%	1033	12.4%
	Wave 4	2712	190	7.0%	<5	0.1%	206	7.6%
	Wave 5	12040	711	5.9%	5	0.0%	321	2.7%

The percentage of cases 65 years or older who died among confirmed cases linked to outbreaks notified in wave 5 was 4.4%, compared to between 13.0% and 24.2% in waves 1-4

Note: disease severity information is only available 12,040/17,710 (68%) cases in wave 5, and deaths may still accrue among known cases



# Burden of disease associated with COVID-19 outbreaks in Nursing Homes and Community Hospitals, Wave 5 (weeks 51 2021 to week 28 2022)



Outbreaks Location <sup>7</sup>	Outbreak			Confirmed cases for which disaggregate data are available				
	Number of outbreaks	Number of cases*	Number of deaths <sup>#</sup>	Number	Number hospitalised	Number admitted to ICU	Number hospitalised and died	Number who died
Comm. Hosp/Long-stay unit	121	1632	22	1177	195	<5	8	17
Nursing home	819	16078	356	10863	516	<5	70	304
<b>Total</b>	<b>940</b>	<b>17710</b>	<b>378</b>	<b>12040</b>	<b>711</b>	<b>5</b>	<b>78</b>	<b>321</b>

\*the larger between the aggregate number of confirmed cases reported or the number of confirmed linked cases. In wave5, includes cases confirmed by PCR or Antigen testing

<sup>#</sup>the larger between the aggregate number of outbreak deaths reported and the number of linked cases (confirmed and probable) who died.

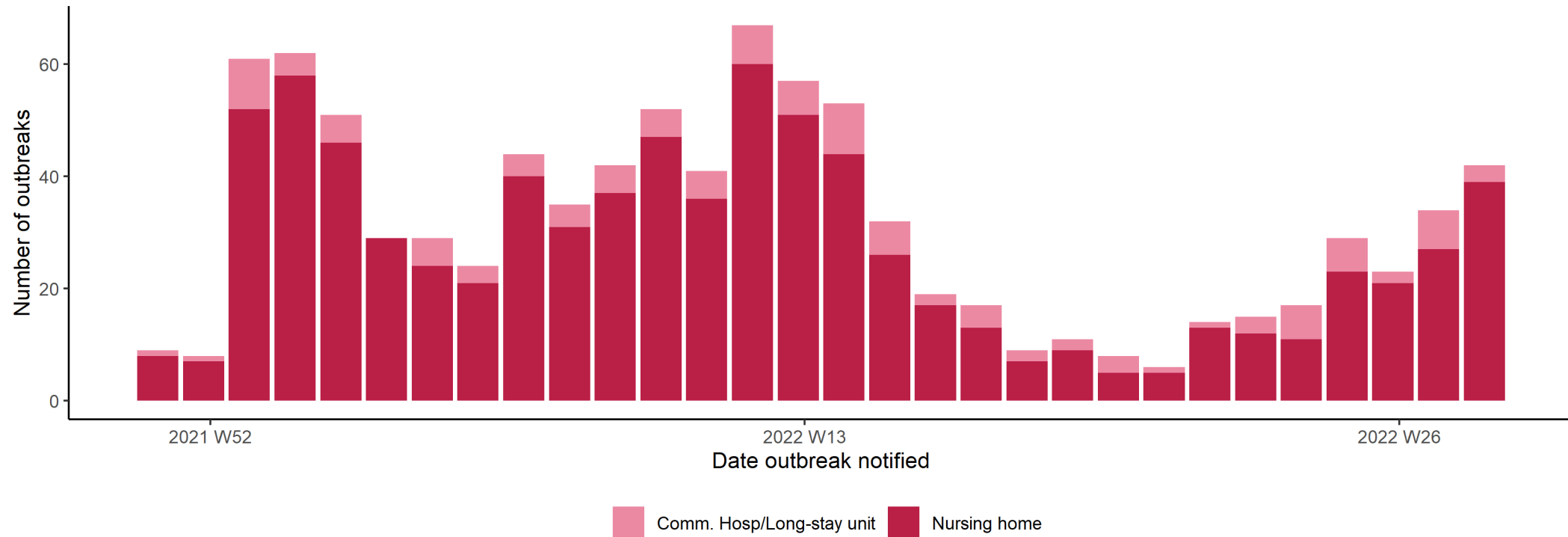
## Wave 5:

- 940 outbreaks in wave 5
- 17,710 cases were reported associated with these outbreaks, of which there was disaggregate data available on 12,040 confirmed cases (68%)
- Overall, there were 378 outbreak associated deaths among the 17,710 cases reported (2.1%).
- 711 of 12,040 confirmed outbreak cases for which disaggregate data are available (5.9%) were hospitalised (age range 18-106 yrs, median 82 yrs).
- 321 of 12,040 confirmed outbreak cases for which disaggregate data are available (2.7%) died (age range 52-103 yrs, median 88 yrs).

## Week 28 2022

- Forty-two new outbreaks -236 associated cases (range 0-20 cases per outbreak)

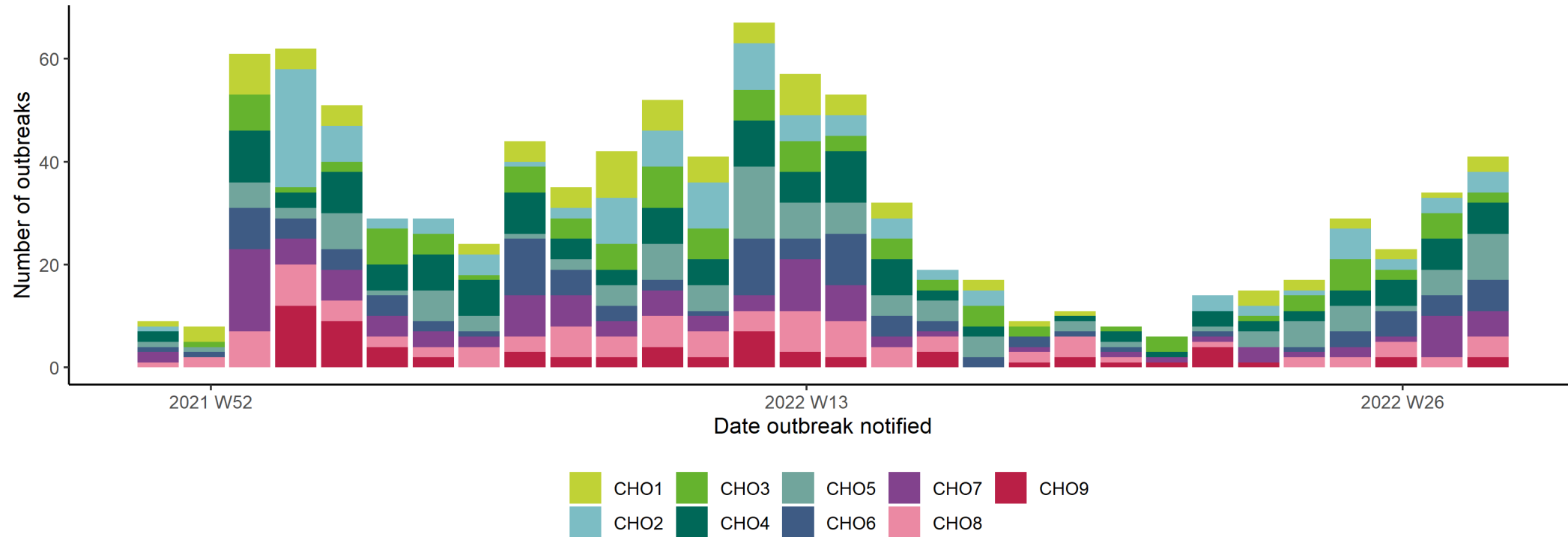
# Weekly number of COVID-19 outbreaks in Nursing Homes and Community Hospitals, Waves 5 (week 51 2021 – week 28 2022)



## Waves 5:

- 940 nursing home and community hospital/long stay unit COVID-19 outbreaks notified
- The distribution of outbreaks reflects the rise of different Omicron sublineages, with peaks in the number of outbreaks in week 2 and week 12 2022. Following a gradual decrease in the number of outbreaks to 6 in week 21 2022, this has increased again to 42 in week 28 2022

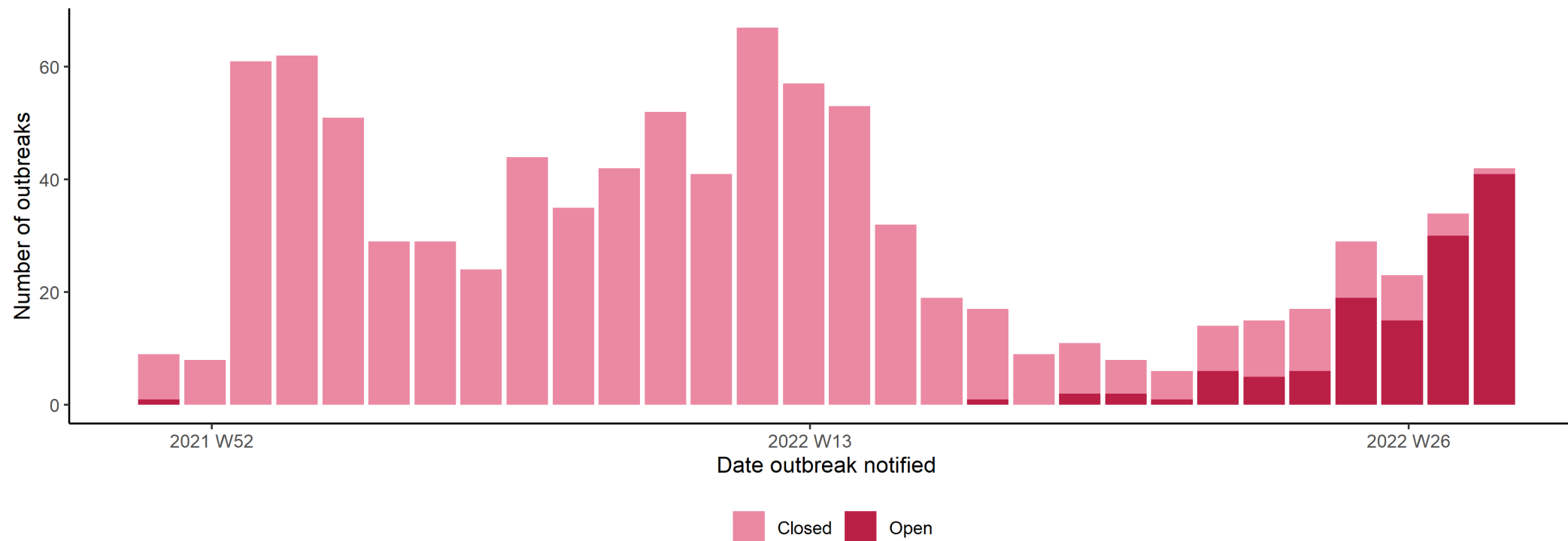
# Regional distribution of outbreaks in Nursing Home and Community Hospitals, Waves 5 (week 51 2021 – week 28 2022)



## Wave 5:

- The highest number of outbreaks was reported in CHO4 (136 outbreaks) followed by CHO2 & CHO5 (116 outbreaks each)
- Nine CHOs were represented in the 42 outbreaks notified in week 28 2022

# Open and closed outbreaks by week in Nursing Home and Community Hospitals, Wave 5 (week 51 2021 to week 28 2022)



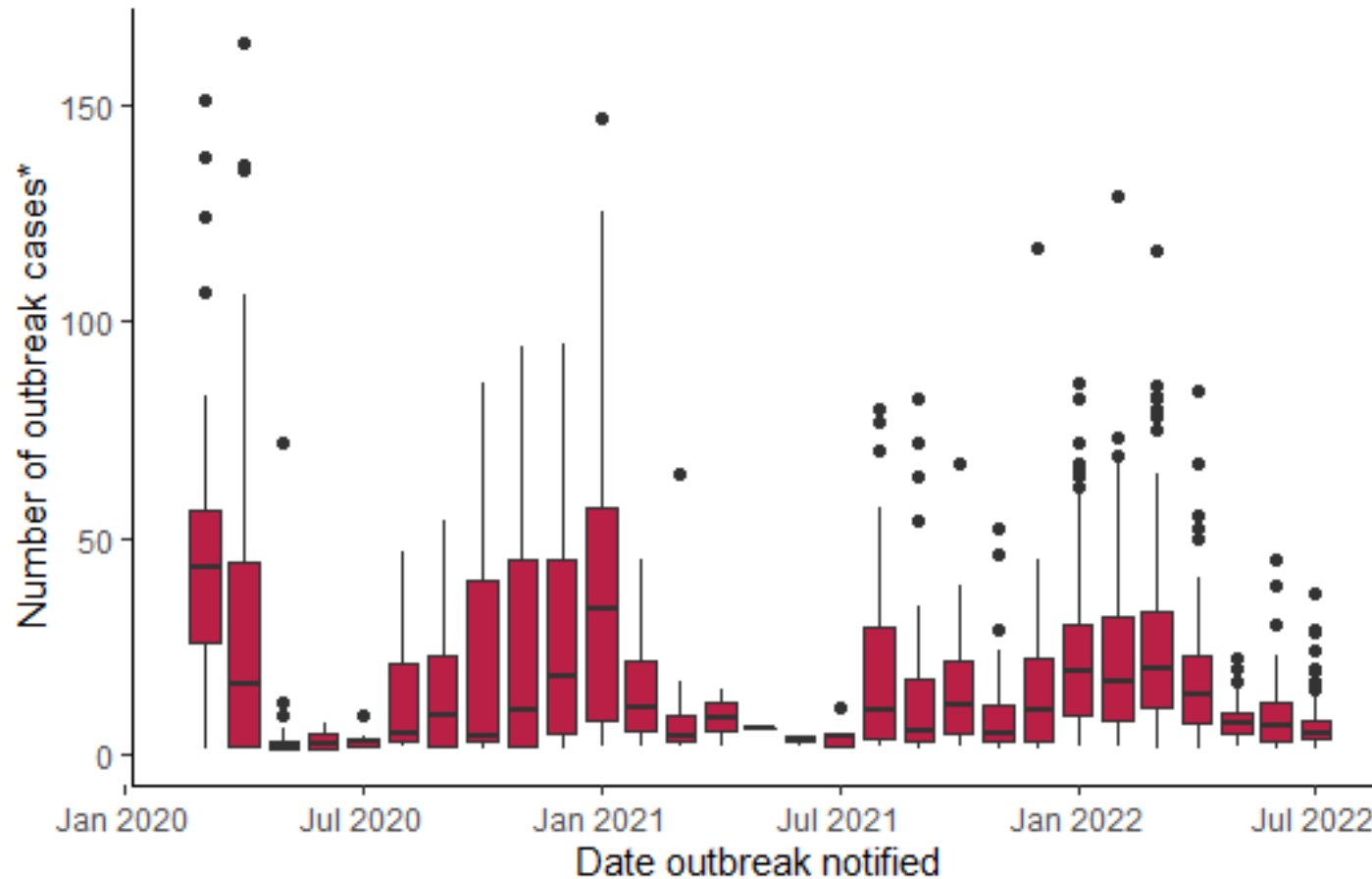
- On CIDR, 129 outbreaks are reported as being still open in these settings

## Outcomes among confirmed cases linked to outbreaks in Nursing Homes and Community Hospitals for which disaggregate data are available, by age group, Wave 5 (week 51 2021 to week 28 2022)

Age group	Number	Number hospitalised	% hospitalised	Number admitted to ICU	% ICU	Number who died	% died
<45 yrs	2800	38	1.4%	<5	0.0%	<5	0.0%
45-64 yrs	2040	48	2.4%	<5	0.0%	<5	0.2%
65-74 yrs	928	78	8.4%	<5	0.1%	19	2.0%
75-84 yrs	2527	253	10.0%	<5	0.1%	82	3.2%
85+ yrs	3745	294	7.9%	<5	0.0%	216	5.8%
<b>Total</b>	<b>12040</b>	<b>711</b>	<b>5.9%</b>	<b>5</b>	<b>0.0%</b>	<b>321</b>	<b>2.7%</b>

Note: disease severity information is only available for 12,040/17,710 (68%) cases in wave 5, and deaths may still accrue among known cases

# Distribution of outbreak size\* by month of outbreak notification

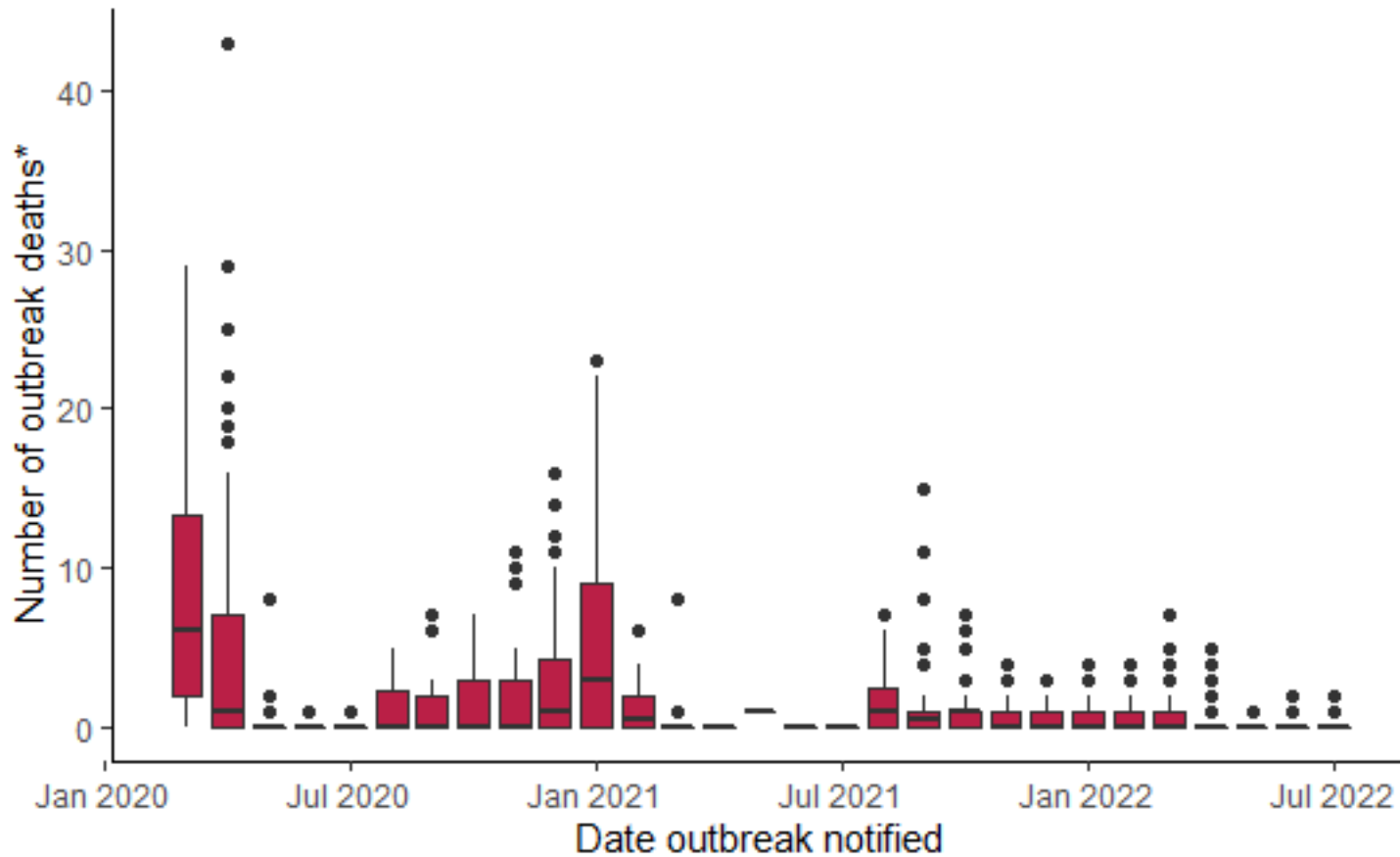


The median outbreak size has remained relatively low since the vaccination programme commenced in January/February 2021

The median outbreak size for outbreaks reported in March 2022 increased to 20, reduced to 14 in April, and is 5 in July to date (Note: data for June and July likely incomplete)

\*Outbreak size is based on the larger between the aggregate number of confirmed cases reported and the number of confirmed linked cases

# Distribution of number of associated deaths\* per outbreak by month of outbreak notification



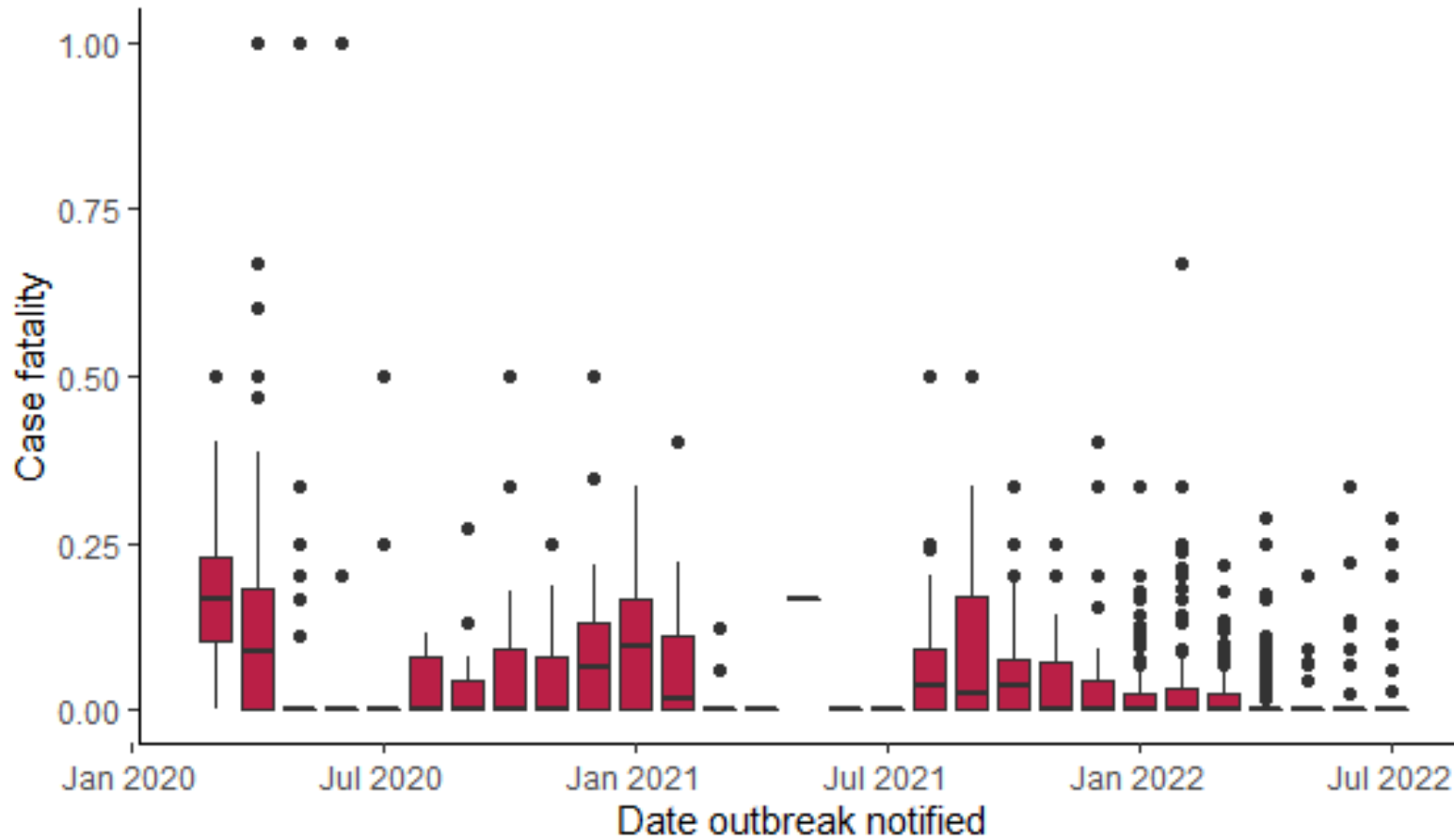
The median number of deaths per outbreak has remained relatively low since the vaccination programme commenced in January/February 2021.

The monthly median number of deaths per outbreak has remained at zero since November 2021 (Note: data for June and July likely incomplete)

Note: Later outbreaks in the series may still be accruing cases and deaths

\*Number of associated deaths is based on the larger between the aggregate number of deaths reported and the number of linked cases who died (confirmed and probable). Only outbreaks with case information (aggregate or disaggregate) are included in this calculation

# Distribution of outbreak case fatality by month of outbreak notification



The median outbreak case fatality has remained relatively low since the vaccination programme commenced in January/February 2021.

The monthly median outbreak case fatality has remained at zero since November 2021 (Note: data for June and July likely incomplete)

Note: Later outbreaks in the series may still be accruing cases and deaths

Note: Case fatality is calculated as the number of associated deaths (defined slide 15) as a percentage of the outbreak size (defined slide 14). Only outbreaks with case information (aggregate or disaggregate) are included in this calculation